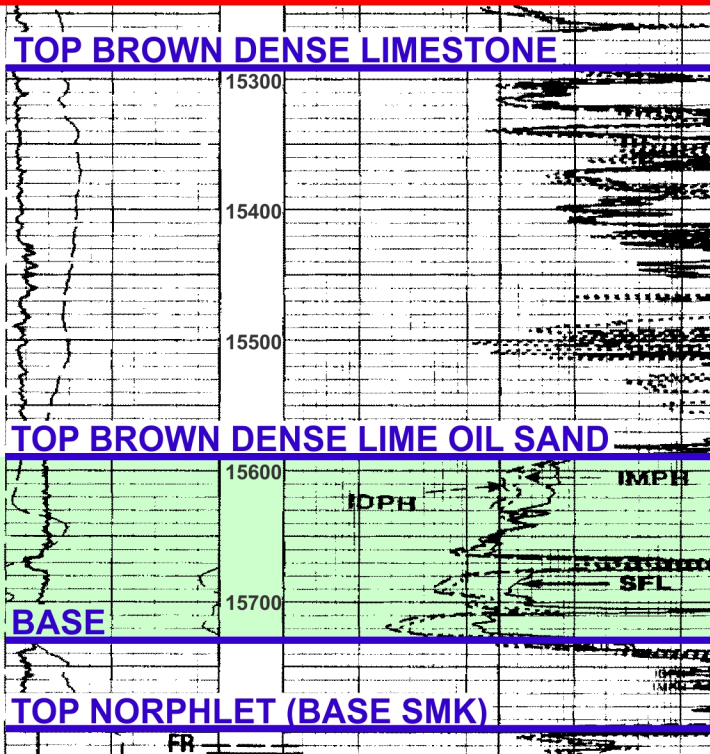


SPOONER (HUGHES-RAWLS) #1 Melvin VLSU, VOSSBURG FIELD, JASPER COUNTY, MS

DIL (Vertical Well)

LATERAL SPURRED 1/16/2000

COMPLETED 2/13/2000



Spooner (Hughes-Rawls) #1 Melvin VLSU

Vossburg Field - First BDL Reservoir Targeted With Lateral
815' Lateral, TVD 15,653' (MD 16,117')

Initially Completed as a Vertical BDL Oil Sand Completion (1/1995)
(Reservoir Already Significantly Pressure-Depleted)

Produced 295,595 BO 1995-2000 - Vertical BDL Sand Completion
In 2000, Plugged Back and Sidetracked; **Drilled 815' Lateral** and
Recompleted Well as a Horizontal Open-Hole BDL Sand Completion
Produced an Additional 444,641 BO 2000-2014 (To 2/2014)

Cumulative Production (2/2014): 740,236 BO

Current Status: Still Producing ~1100 BO/Month (~37 BOPD)

