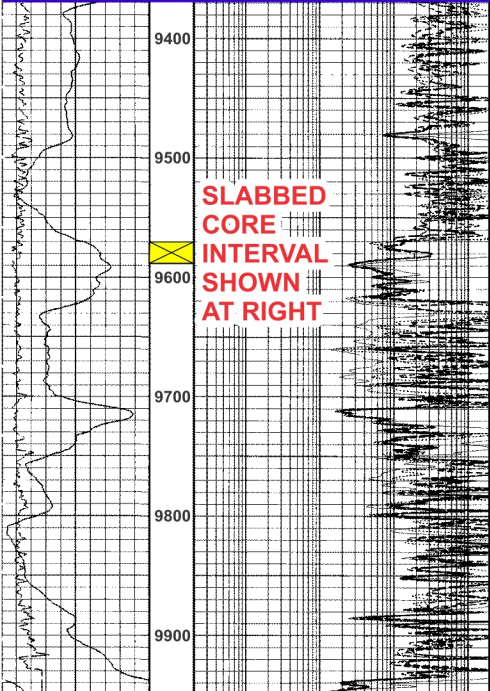


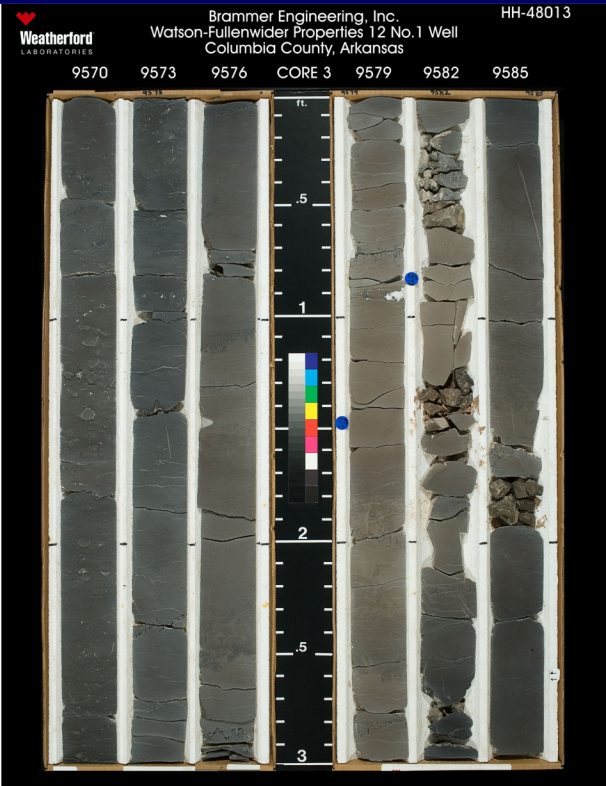
BRAMMER Watson-Fullenwider PL #1-12H, DORCHEAT-MACEDONIA FIELD, COLUMBIA COUNTY, AR

PILOT HOLE

TOP BROWN DENSE



**SLABBED
CORE
INTERVAL
SHOWN
AT RIGHT**



Weatherford LABORATORIES
Brammer Engineering, Inc.
Watson-Fullenwider Properties 12 No. 1 Well
Columbia County, Arkansas
HH-48013

9570 9573 9576 CORE 3 9579 9582 9585

SPUDED 7/1/2010 **P&A 12/19/2012**

Brammer WFPL #1-12H
 Dorcheat-Macedonia Field
 Cored BDL in Pilot Hole
 3,847' Lateral, TVD 9,499' (MD 12,483')
 Set 4 1/2" P-110 Casing at 12,483'
 Frac'd With 5 Stages / 1,068,381 lbs.
 Completed December 2010
 I.P.: 49 BOPD + 137 MCFGPD (2% H₂S)
 Plugged & Abandoned 12/19/2012

