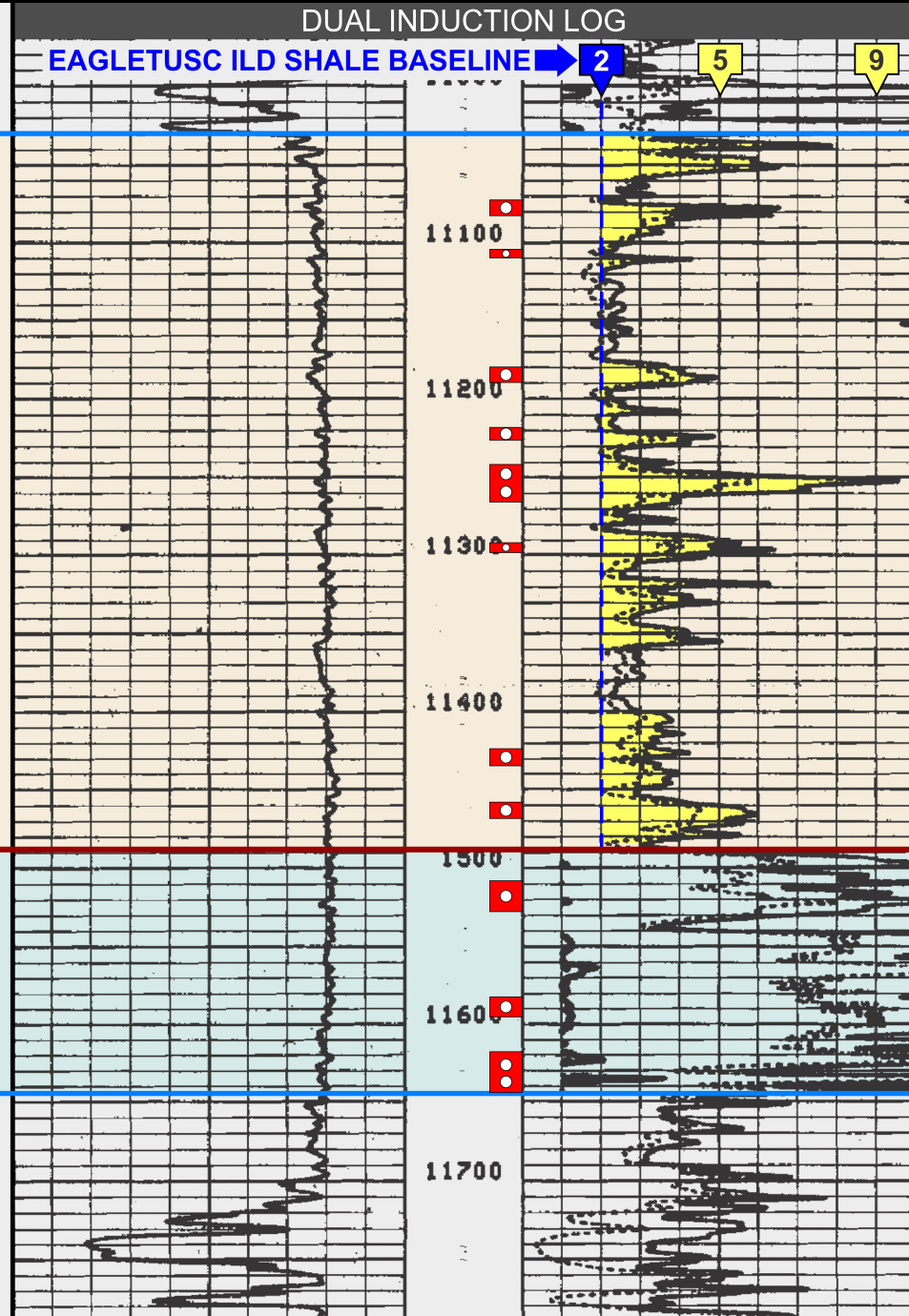


# LEGACY TYPE LOG - LITTLE SILVER CREEK FIELD - "TMS" INTERVAL

## Texas Pacific #1 Winnie Blades (42-1S-8E, Tangipahoa Parish)

THE WINNIE BLADES WELL IS (IRONICALLY) CONSIDERED BY MANY TO BE THE LEGACY TYPE LOG FOR THE TMS



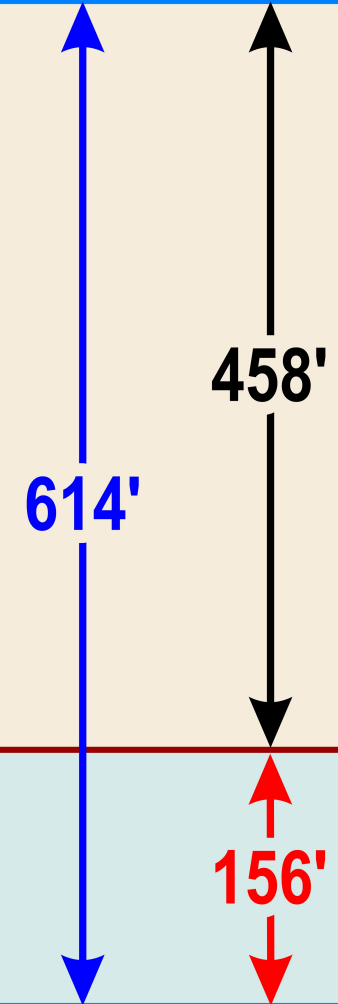
UPPER TUSCALOOSA  
TOP TMS (ENCANA ACM / PR SFR STRAT. EQ.)

MOST OF THE ACTUAL PERFORATIONS IN THE #1 WINNIE BLADES "TMS" WELL WERE EFFECTED ACROSS THE EAGLETUSC INTERVAL, NOT THE "TRADITIONAL" TMS

EAGLETUSC

"TRADITIONAL" TMS  
(Moore, BRI, others)

LOWER TUSCALOOSA



THE EAGLETUSC INTERVAL HAS BEEN IGNORED BY ALL TMS OPERATORS, DESPITE ITS POTENTIAL

RESISTIVITY RELATED TO  $\text{CaCO}_3$  CONTENT, NOT HYDROCARBONS

