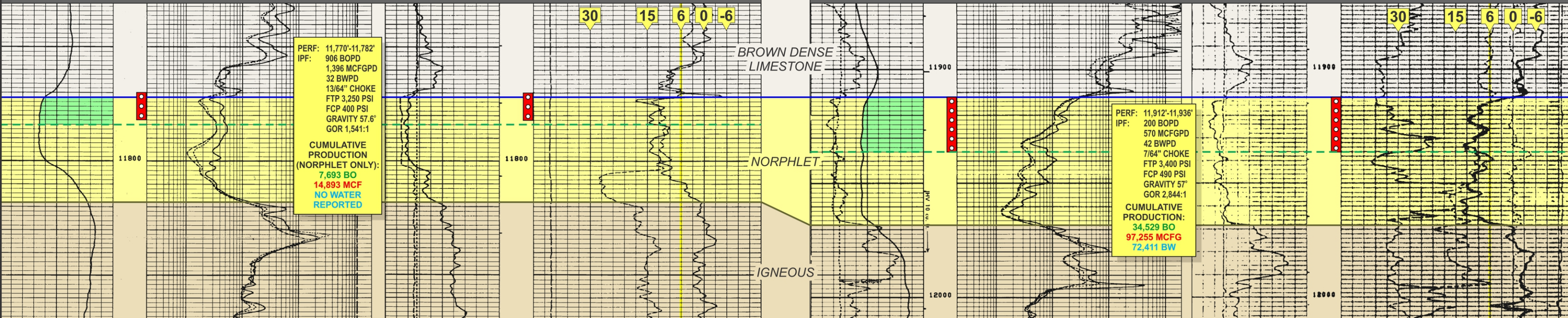




CITIES
#A-1 Pruitt



PRIMARY FUEL
#1 Glass



PERF: 11,770'-11,782'
IPF: 906 BOPD
1,396 MCFGPD
32 BWPD
13/64" CHOKE
FTP 3,250 PSI
FCP 400 PSI
GRAVITY 57.6°
GOR 1,541:1

CUMULATIVE PRODUCTION (NORPHLET ONLY):
7,693 BO
14,893 MCF
NO WATER REPORTED

PERF: 11,912'-11,936'
IPF: 200 BOPD
570 MCFGPD
42 BWPD
7/64" CHOKE
FTP 3,400 PSI
FCP 490 PSI
GRAVITY 57°
GOR 2,844:1

CUMULATIVE PRODUCTION:
34,529 BO
97,255 MCFG
72,411 BW

BROWN DENSE LIMESTONE

NORPHLET

IGNEOUS

30 15 6 0 -6

30 15 6 0 -6

11900

11900

11800

11800

11910

12000

12000